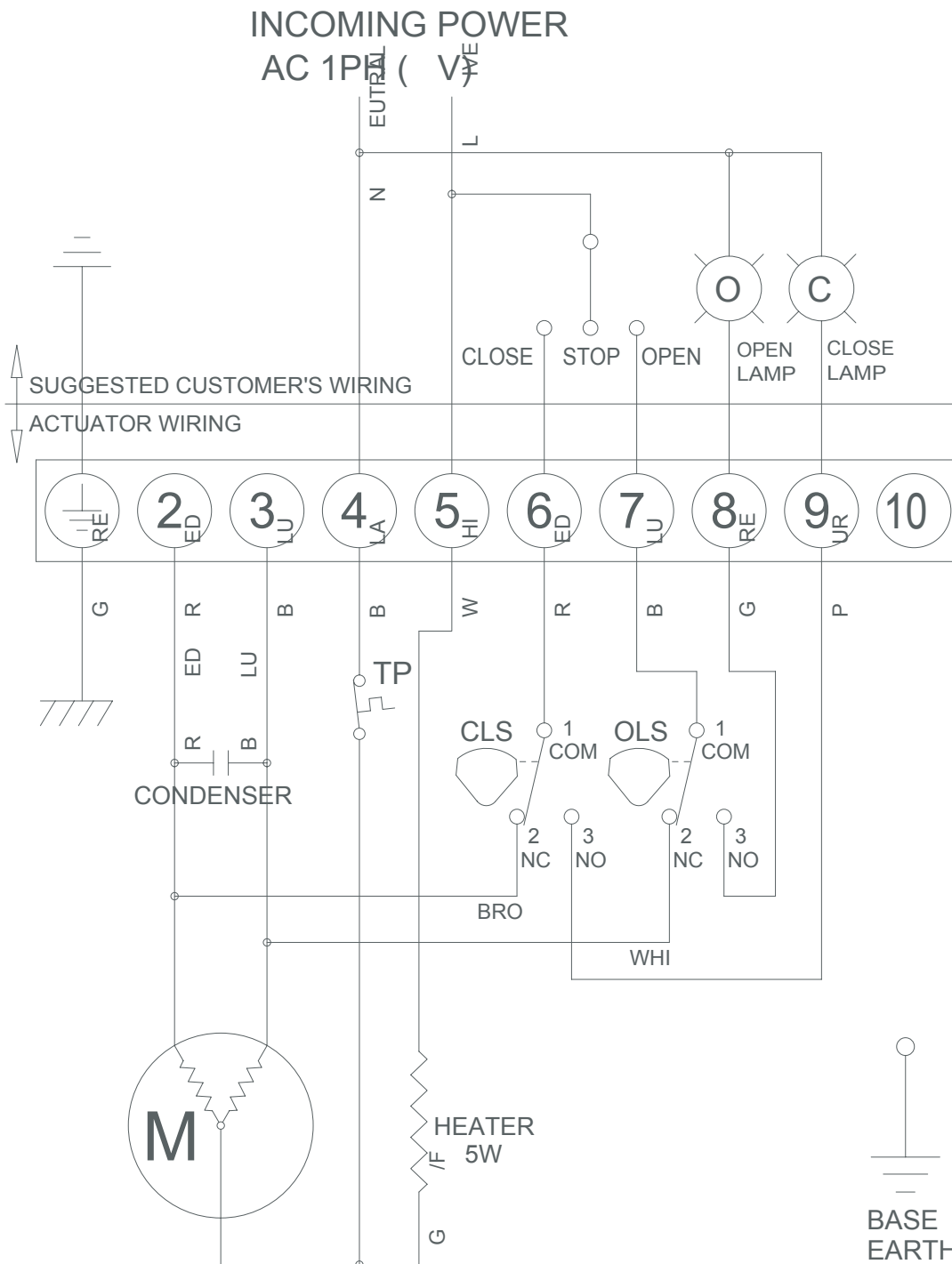


CLS : CLOSE LIMIT SWITCH (250VAC 10A)
 OLS : OPEN LIMIT SWITCH (250VAC 10A)
 TP : THERMAL PROTECTOR (250VAC 15A OPTION)
 *EACH ACTUATOR SHOULD BE POWERED THROUGH ITS OWN INDIVIDUAL SWITCH OR RELAY CONTACTS TO PREVENT CROSS FEED BETWEEN TWO OR MORE ACTUATORS.

TORQUE AND LIMIT SWITCHES OPERATION			
SWITCH	CLOSE ←	INTERMEDIATE	→ OPEN
CLS 1-2			
CLS 1-3			
OLS 1-2			
OLS 1-3			



		DRAWN	DESIGN	CHECKED	APPROVER
		ISSU. DEPT. ITCDR	DATE 2005.03.09	SIZE A4	PROGRAM AUTO CAD
PART NAME 1PH WIRING DIAGRAM		DWG NO JOM-EA-880-110			
OPTION NAME STANDARD					
EA-880	APP'L,FILE				